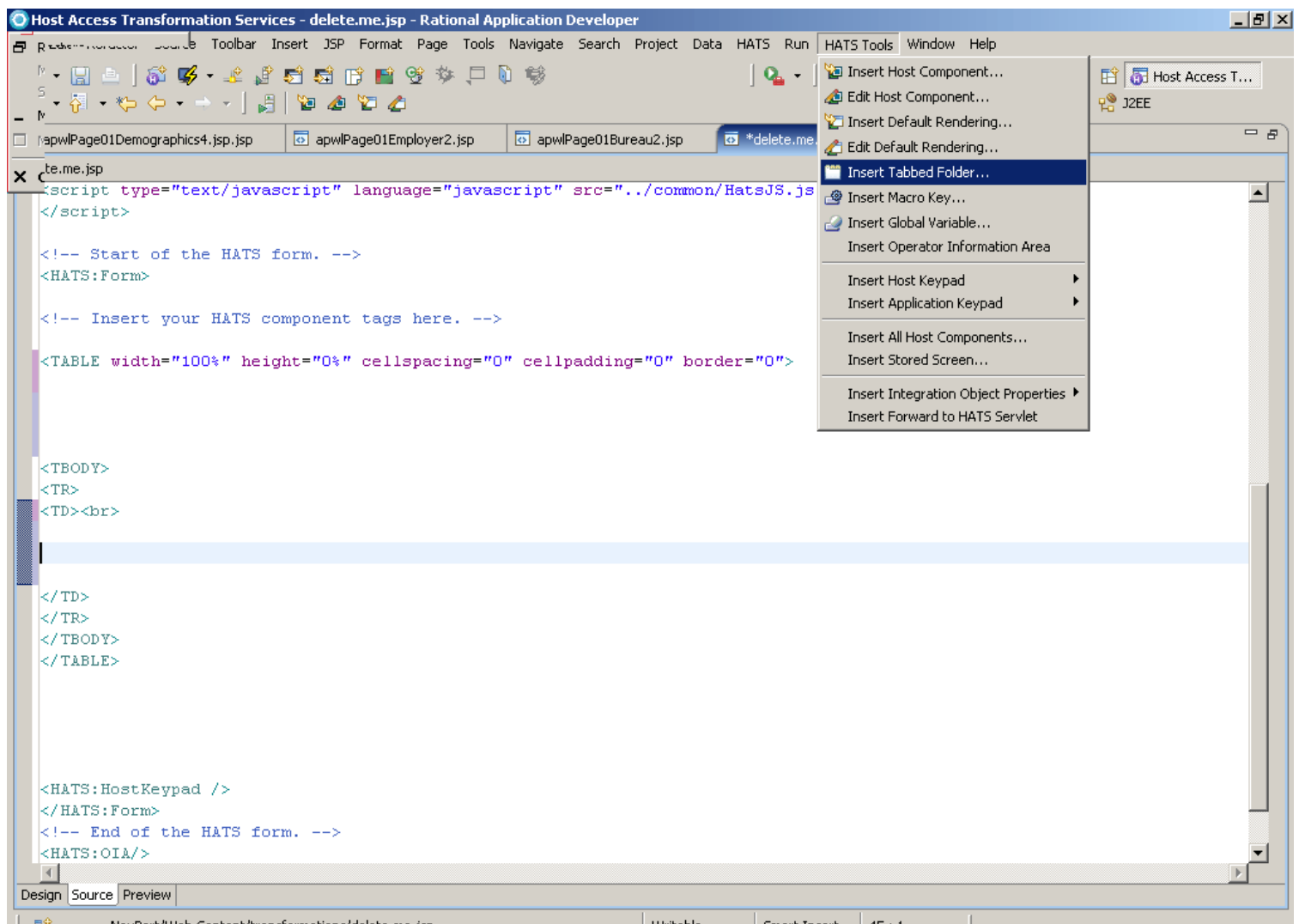


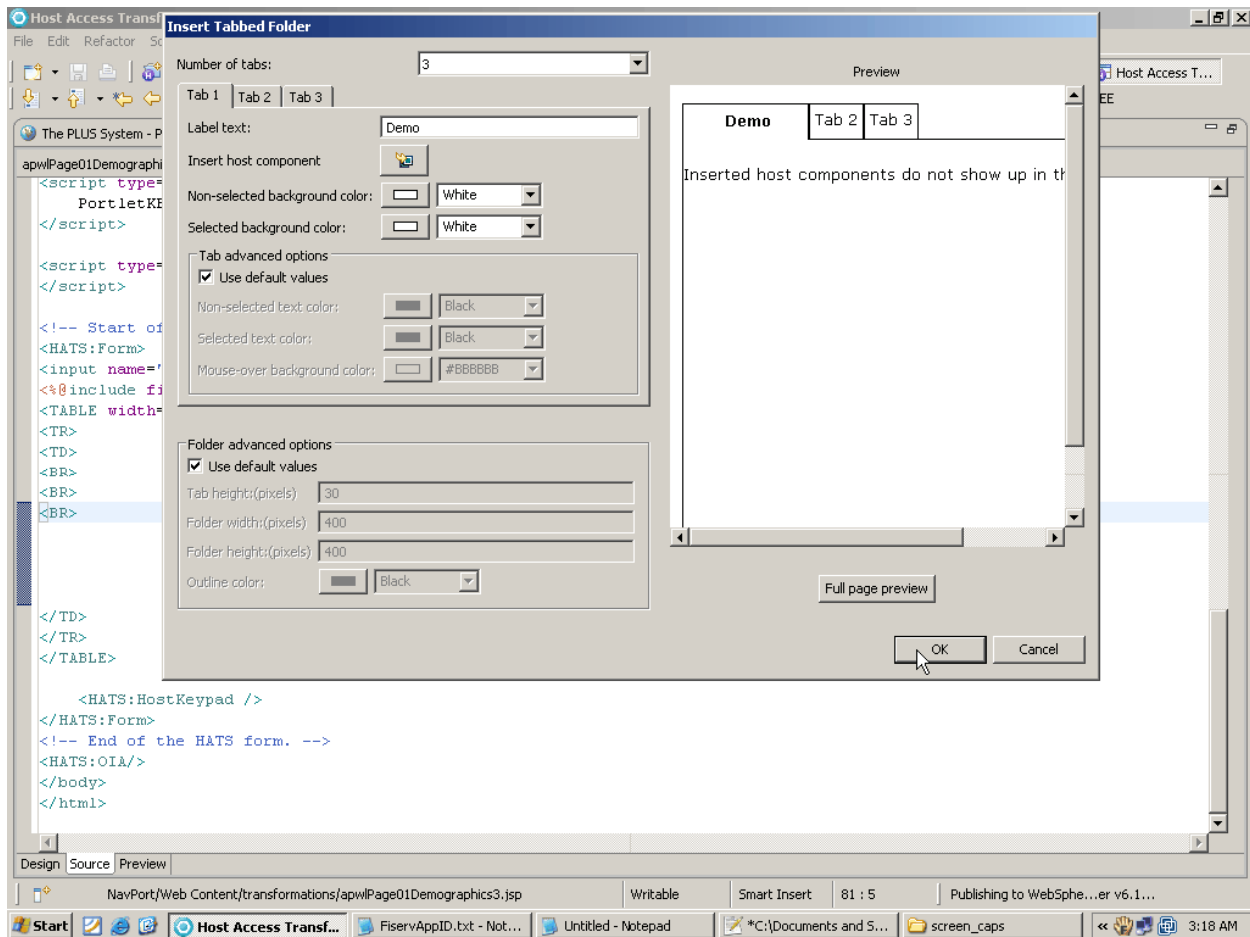
# ADDING TABBED FOLDERS IN HATS APPLICATIONS

Tabbed folders can be added in HATS applications by using the built in tabs functionality. Adding tabs in an application makes it more effective and better presentable; as data from different screens can be presented in tabs or data from a single screen can be displayed in different tabs for added functionality and ease of use for users. In this article we discuss how to use the built in tabs feature in HATS to add tabs in our applications.

We can insert tabs to any page by using the Insert **Tabbed Folder** functionality in **HATS Tools** as shown below:



This brings up the following window:



Using the options shown in the above window, we can define the number of tabs that we want to insert, name the tabs, define their styles, for example, the on-click tab color, active and inactive tab colors, tab area colors etc.

Clicking the **OK** button inserts the code needed to insert tabs on our page.

HATS inserts the tabs as **div** tags in our JSP, that is, each tab has two **div** tags: One tag defines its functionality as what should be the on click response for a particular tab, whether it's the default tab to be displayed on the page and its style etc. The other **div** tag for a tab defines its content area where we can insert host components that make up the display for a particular tab.

The screenshot below shows a page that shows ten tabs, each for a different screen on the mainframe host:



Reference: IBM InfoCenter

(<http://publib.boulder.ibm.com/infocenter/hatshelp/v71/index.jsp?topic=/com.ibm.hats.doc/doc/javadoc/com/ibm/hats/transform/widgets/package-tree.html>)



© Copyright IBM Corporation 2010  
IBM Global Services  
Route 100  
Somers, NY 10589  
U.S.A.  
Produced in the United States of America  
08-10  
All Rights Reserved

IBM, the IBM logo, [ibm.com](http://ibm.com), Lotus®, Rational®, Tivoli®, DB2® and WebSphere® are trademarks or registered trademarks of International Business Machines Corporation in the United States, other countries, or both. If these and other IBM trademarked terms are marked on their first occurrence in this information with a trademark symbol (® or ™), these symbols indicate U.S. registered or common law trademarks owned by IBM at the time this information was published. Such trademarks may also be registered or common law trademarks in other countries. A current list of IBM trademarks is available on the Web at "Copyright and trademark information" at [ibm.com/legal/copytrade.shtml](http://ibm.com/legal/copytrade.shtml) Other company, product and service names may be trademarks or service marks of others. The information contained in this documentation is provided for informational purposes only. While efforts were made to verify the completeness and accuracy of the information contained in this documentation, it is provided "as is" without warranty of any kind, express or implied. In addition, this information is based on IBM's current product plans and strategy, which are subject to change by IBM without notice. IBM shall not be responsible for any damages arising out of the use of, or otherwise related to, this documentation or any other documentation. Nothing contained in this documentation is intended to, nor shall have the effect of, creating any warranties or representations from IBM (or its suppliers or licensors), or altering the terms and conditions of the applicable license agreement governing the use of IBM software. This document illustrates how one organization uses IBM products. Many factors have contributed to the results and benefits described; IBM does not guarantee comparable results elsewhere.